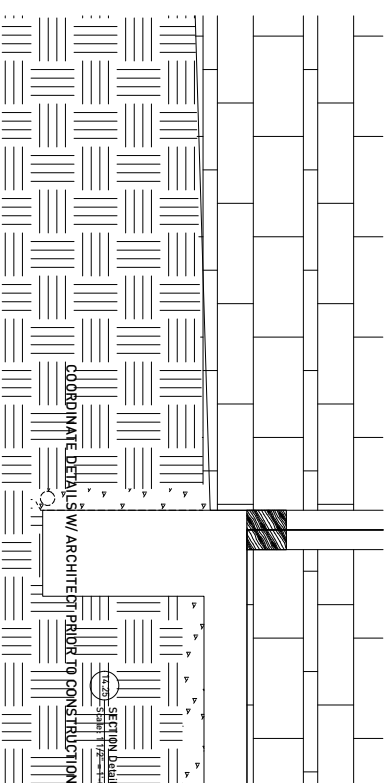
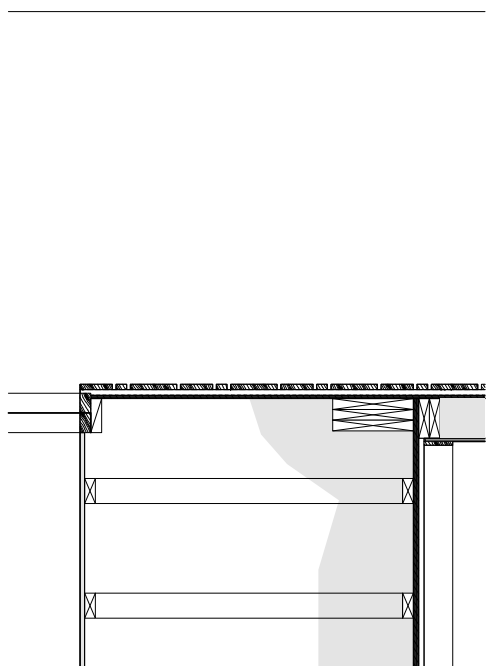
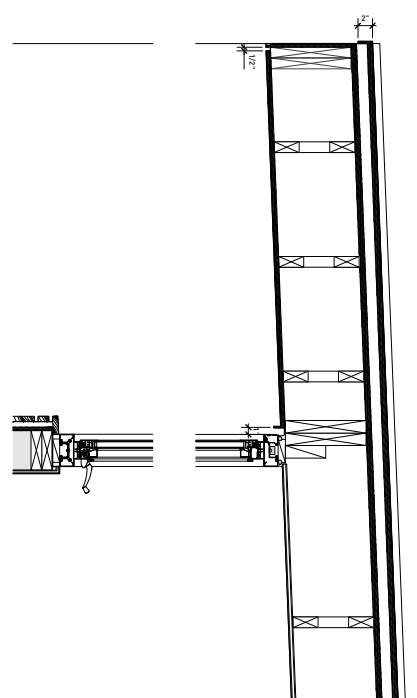


14 SECTION 0411  
 SIFTS 1/2" x 1/4"



COORDINATE DETAILS  
 W/ ARCHITECT PRIOR TO CONSTRUCTION

SECTION 0411  
 SIFTS 1/2" x 1/4"



**SHOAL CREEK**  
 5203 SHOAL CREEK BLVD • AUSTIN, TX • 78757

Webber + Studio, Inc.

301 West Avenue  
 Austin, Texas 78701  
 Fax 512.238.0032

2-MARCH-2011  
 REVISION 1

**A9.22**  
 SECTION  
 DETAILS